

# USB Driver Installation guide for C23\_D22\_D23\_D24

---

## Contents

Introduction .....	2
Preparations.....	2
Installation Guide for automatic driver installation Windows 7.....	4
Installation Guide for manually driver installation for Windows XP and Windows 7 .....	7

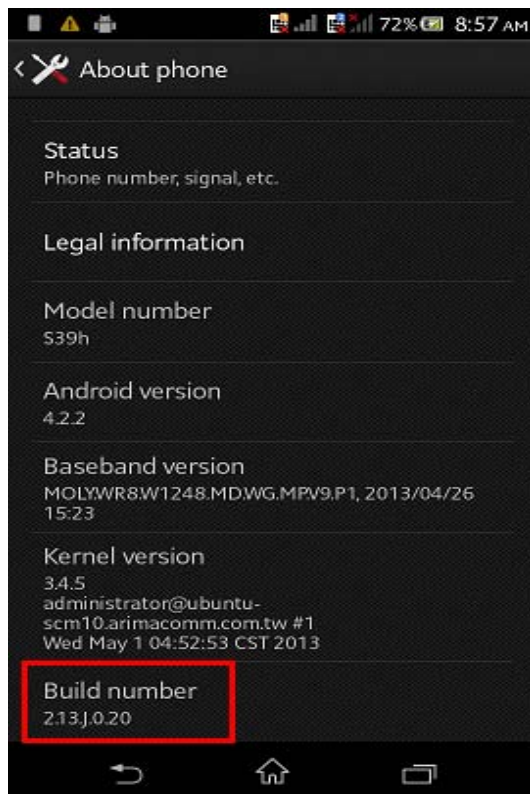
Revision	Description	Date
1	First release	13.07.30
2	D23 added	14.04.16
3	D24 added	14.08.22
4	D22 added	14.09.16

# Introduction

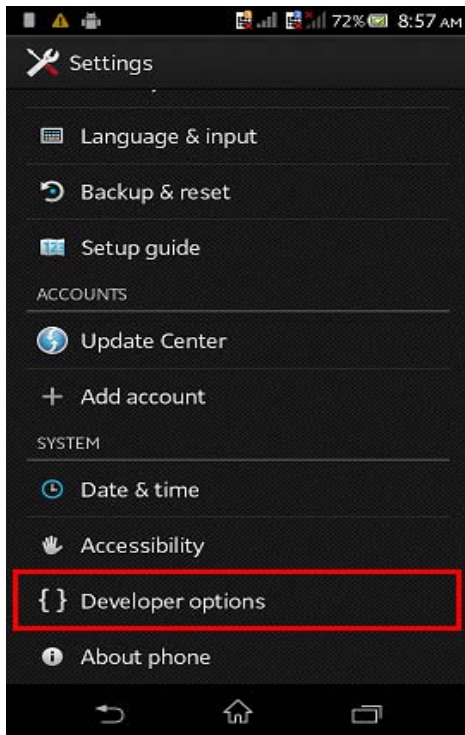
This Guide contains two sections the preparations which are done to the phone, and the Installation Guide for Windows 7 and Windows XP which is done on the computer.

## Preparations

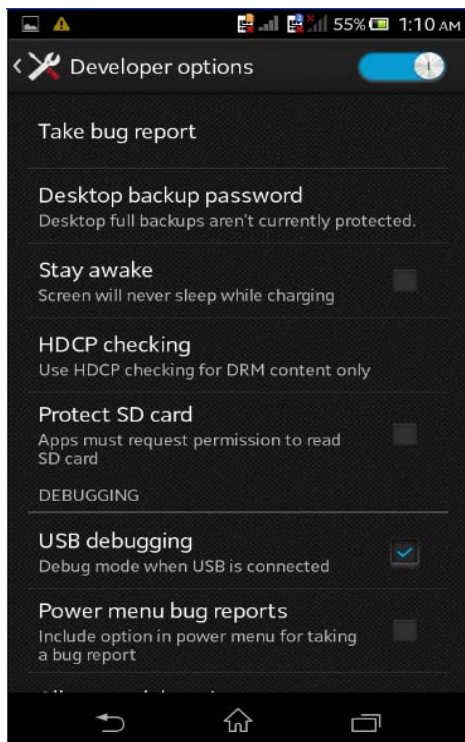
1. Turn on the phone.
2. Enter "Settings -> About phone", hit "Build number" 7 times.



3. "Developer options" menu item will be showed in "Settings" page.



3 . Enable "USB" debugging



# Installation Guide for automatic driver installation

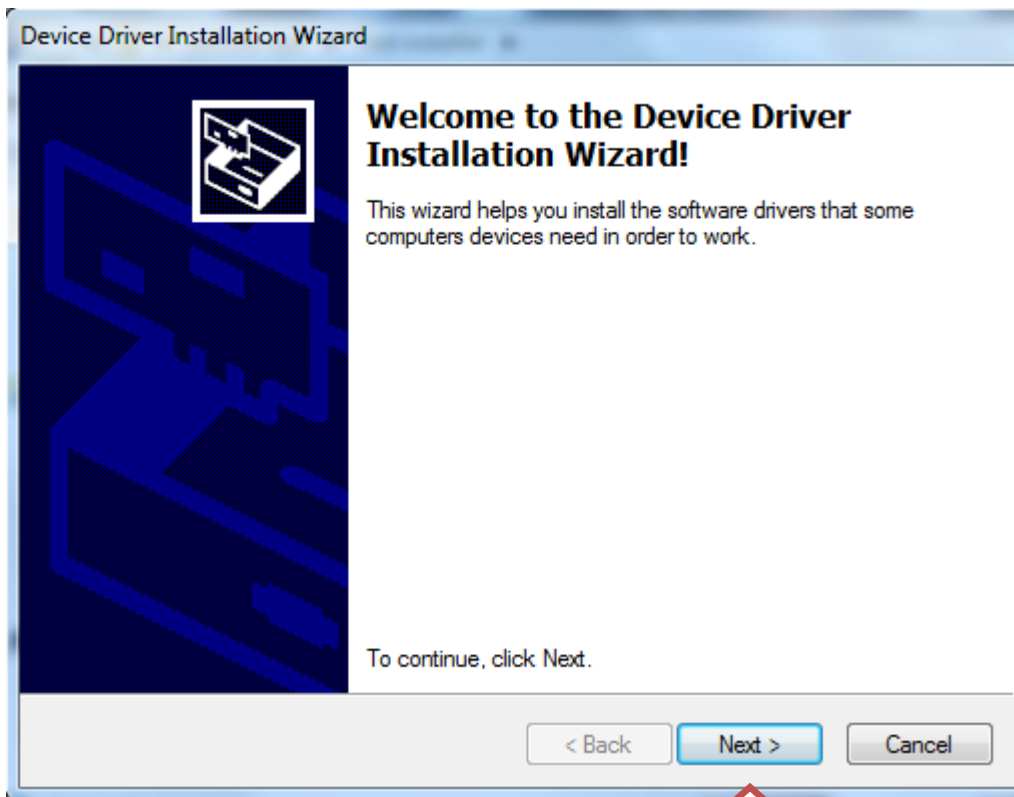
## Windows 7

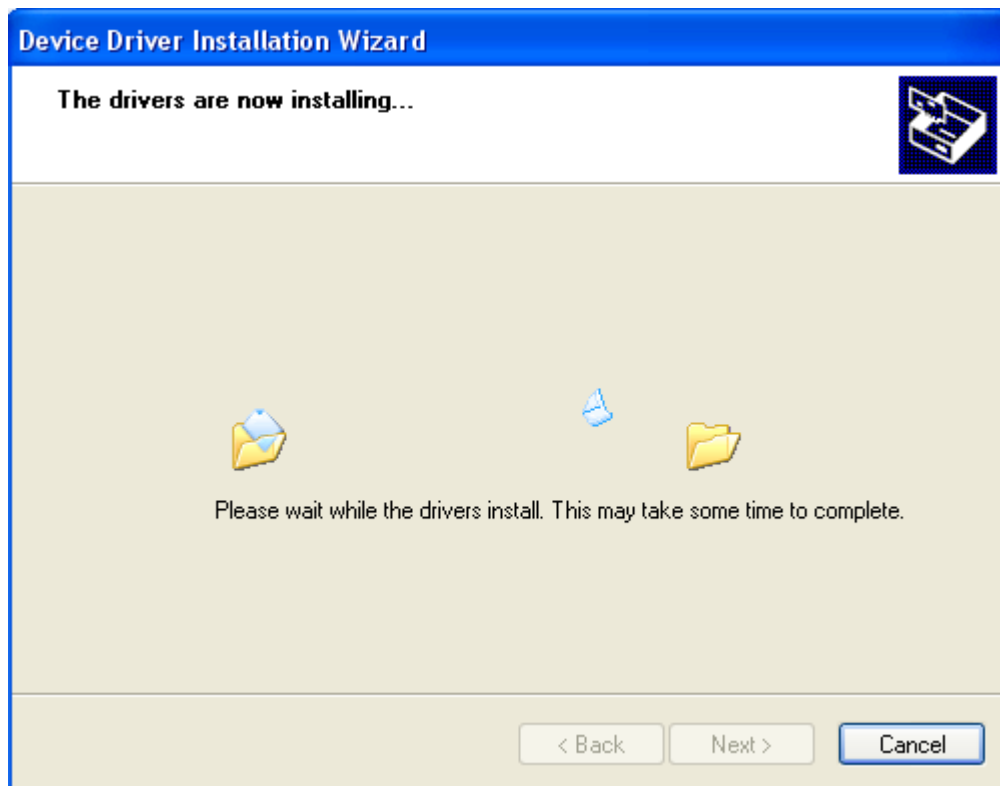
This guide explains how to install the Sony so01xx ADB Interface Drivers.

From the installation package run the Install adb drivers.

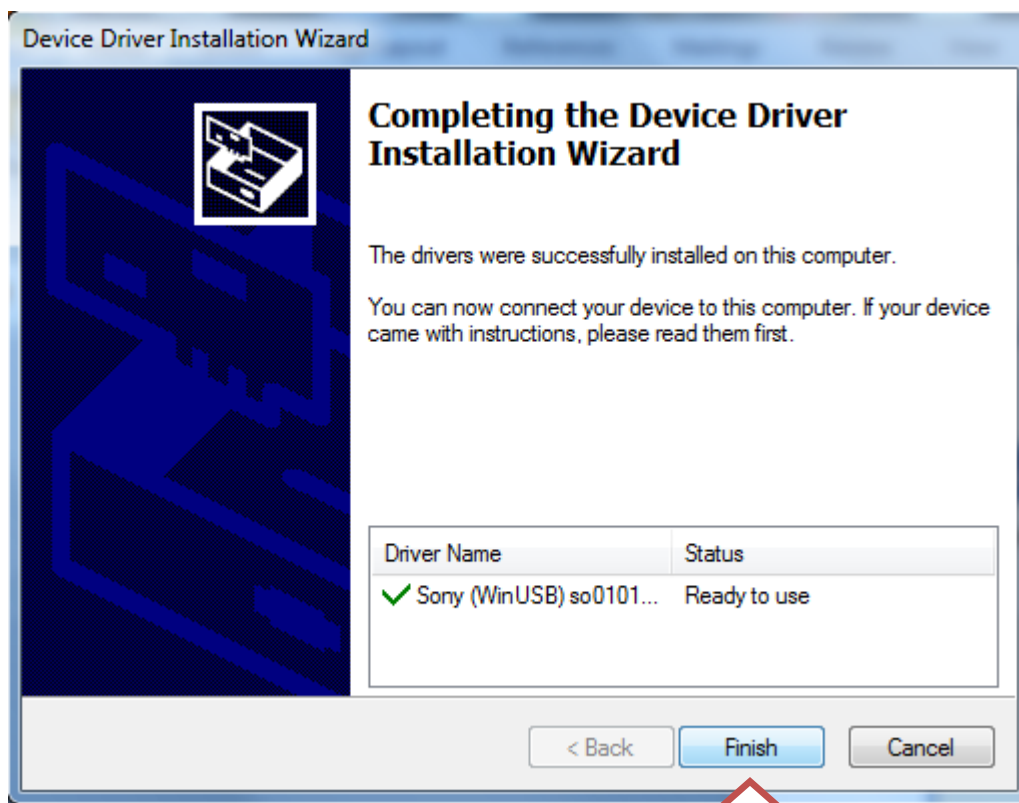


The installation process will then start. Click Next.





Click Finish.



**After the driver installation, the system should find the drivers automatically, if not follow manual Installation Guide below.**

# **Installation Guide for manually driver installation for Windows XP and Windows 7**

This guide explains how to manually install the Sony so01xx ADB Interface Driver on a Windows XP and Windows 7 system.

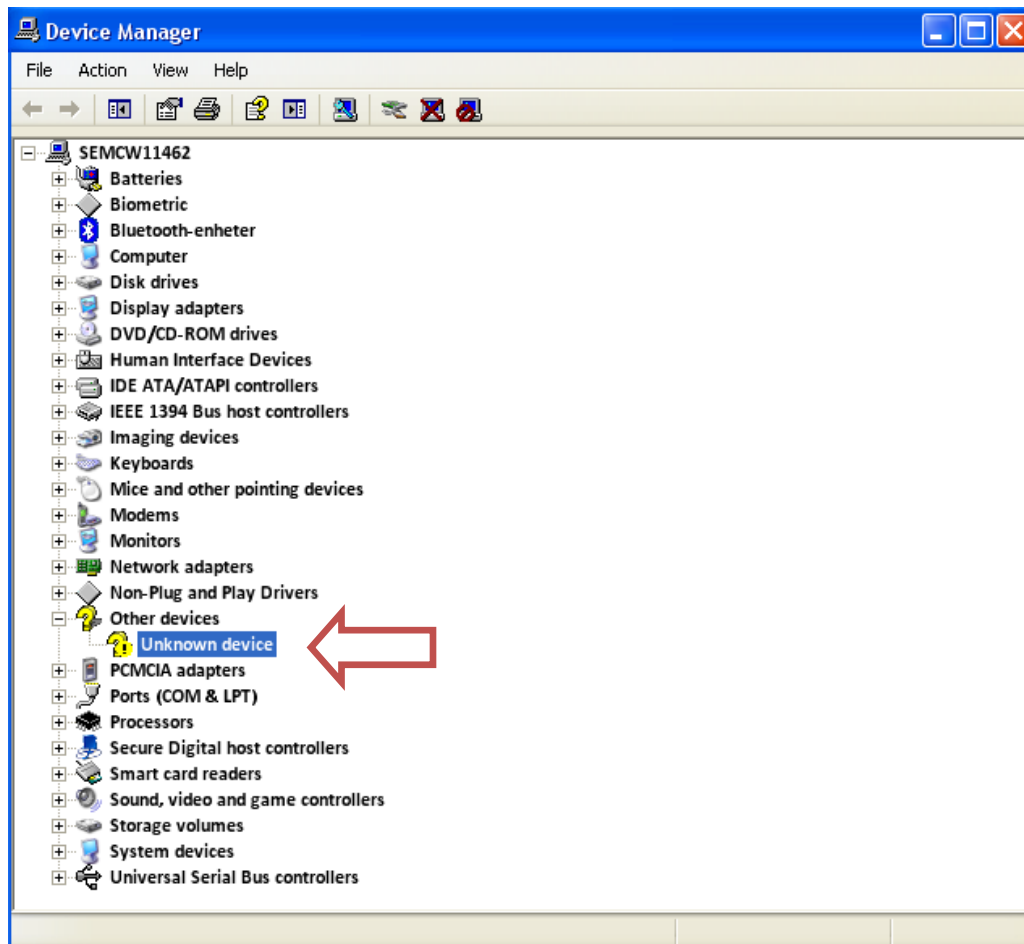
After the preparation step do the following.

If add new hardware pops up, when the phone is connected, follow the guide from Page 10.

If no add new hardware pops up, when the phone is connected, start device manager following the path below. And follow guide from next page.

Open Device Manager from Start->Setting->Control Panel->System->Hardware->Device Manager.

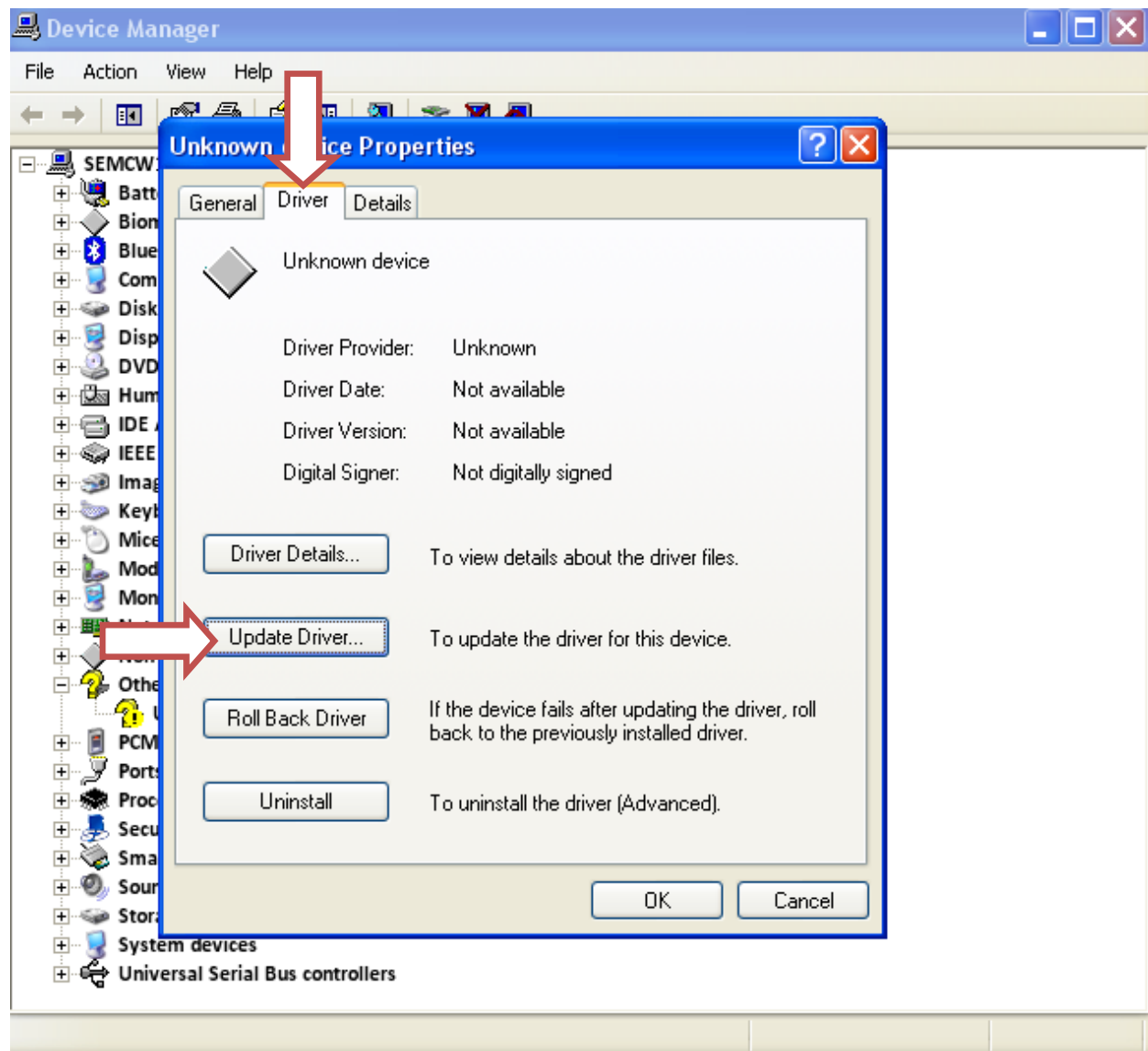
Open Unknown device. That appears when the phone is connected.



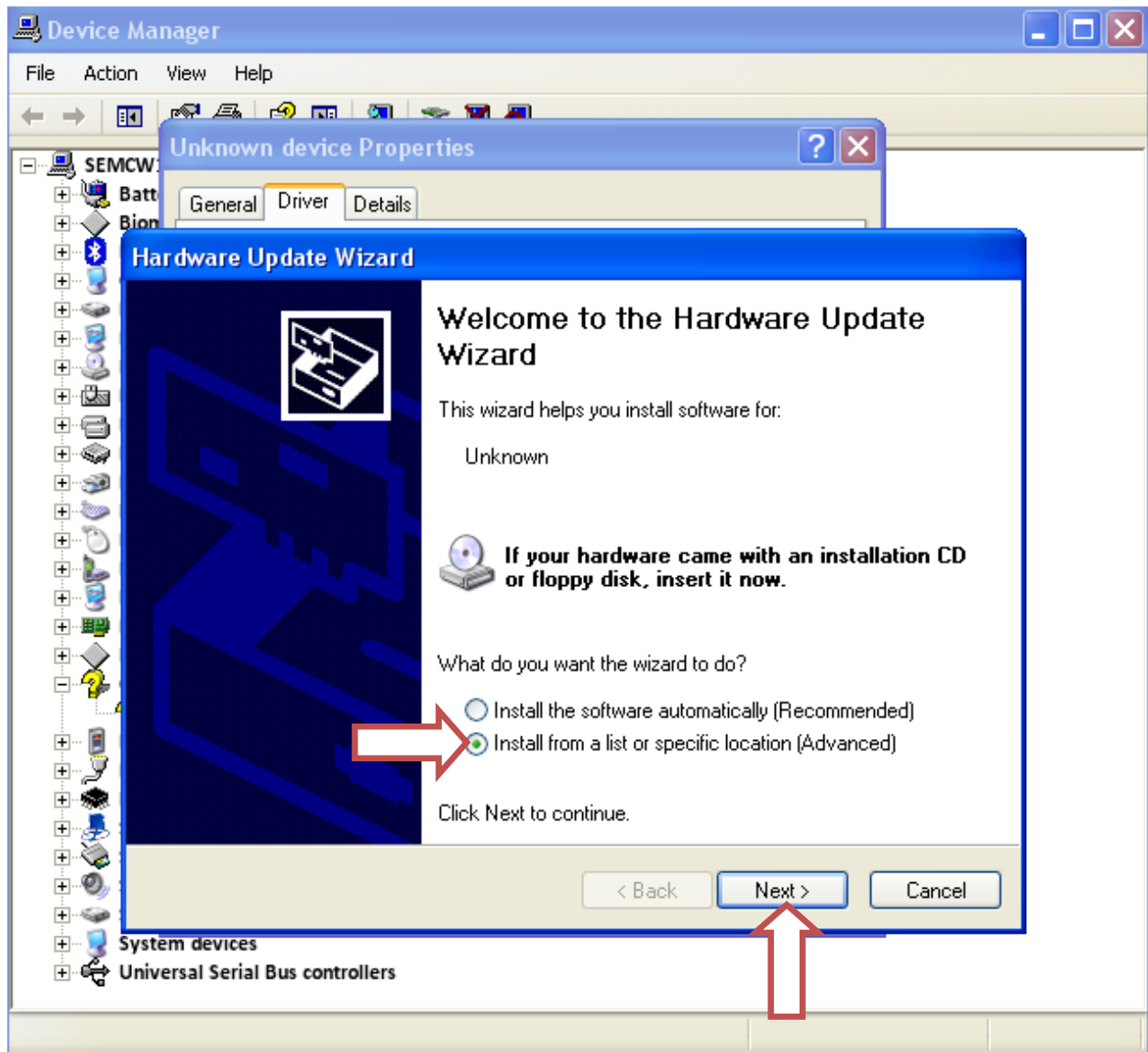


Click the Driver tab.

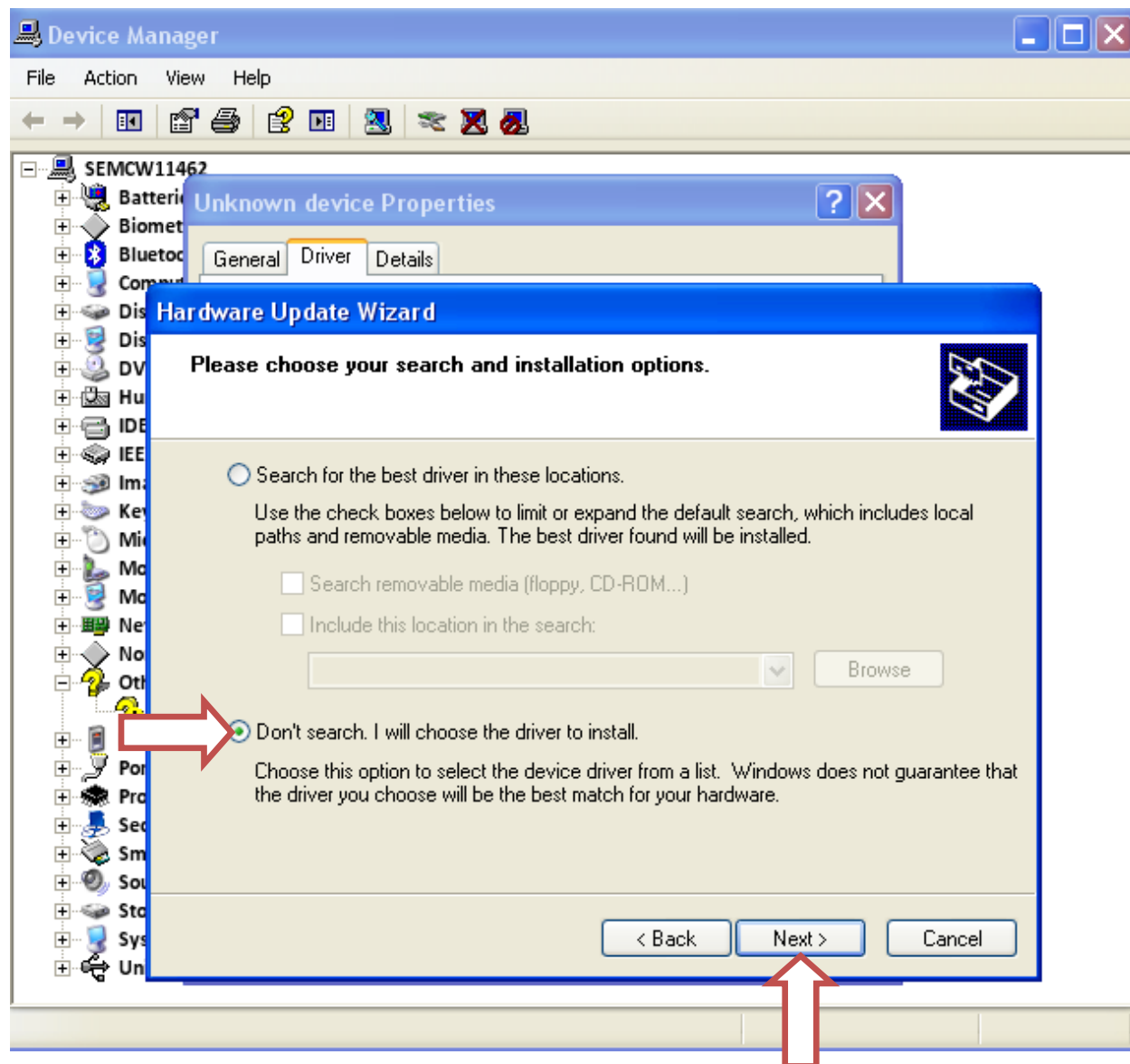
Click Update Driver.



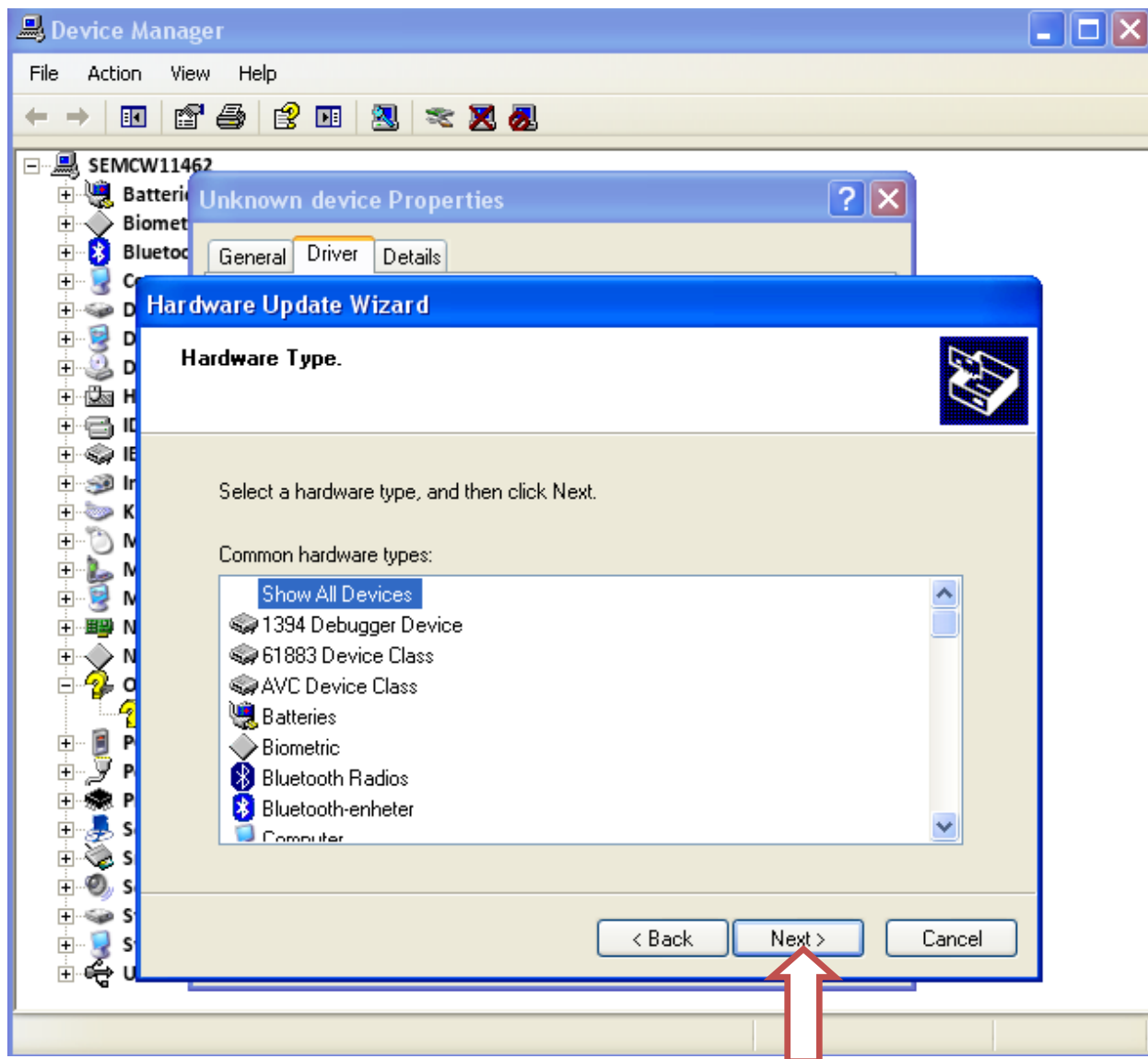
Check Install from a list or specific location (Advanced).  
Click Next.



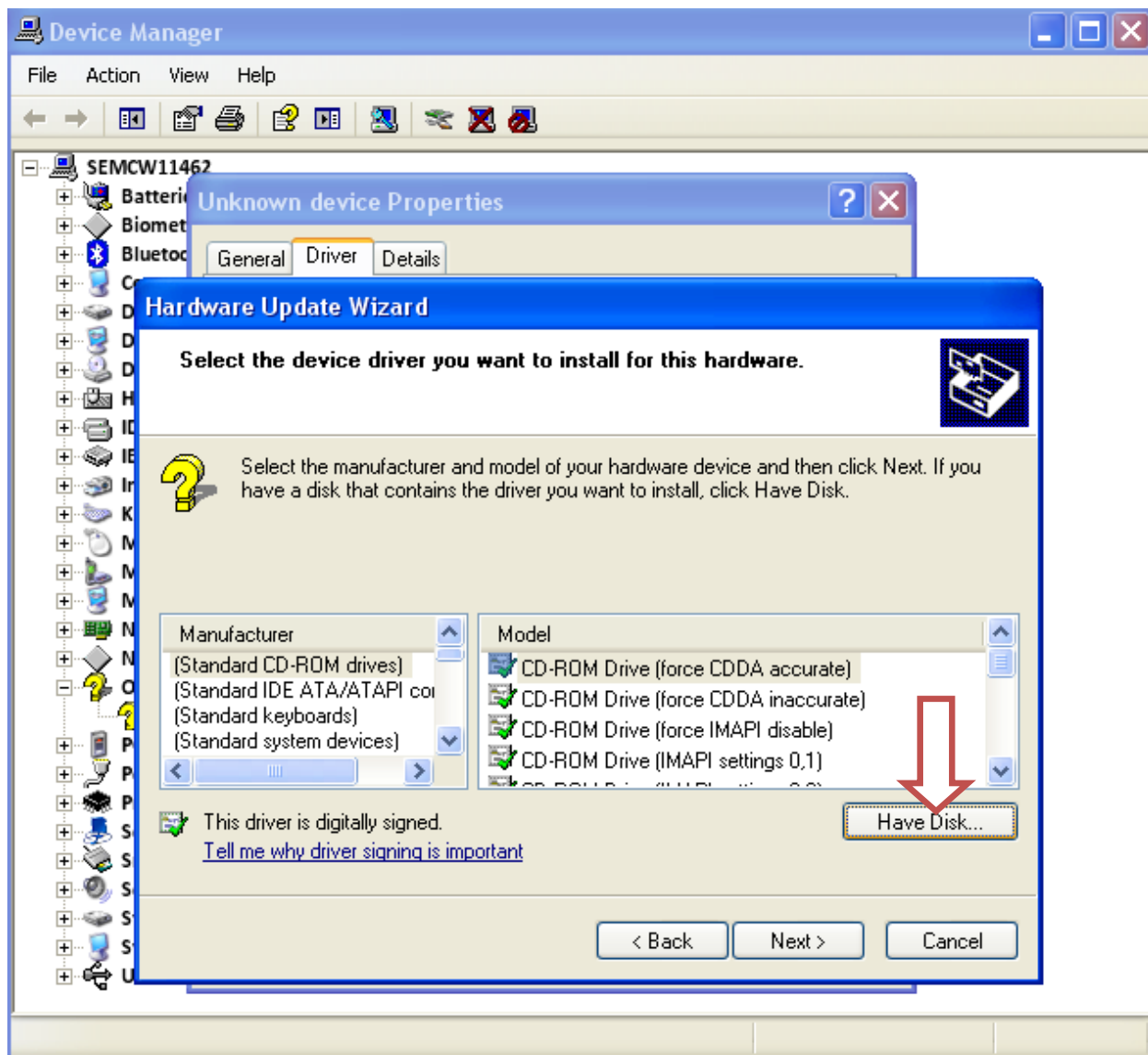
Check don't search. I will choose the driver to install.  
Click Next.



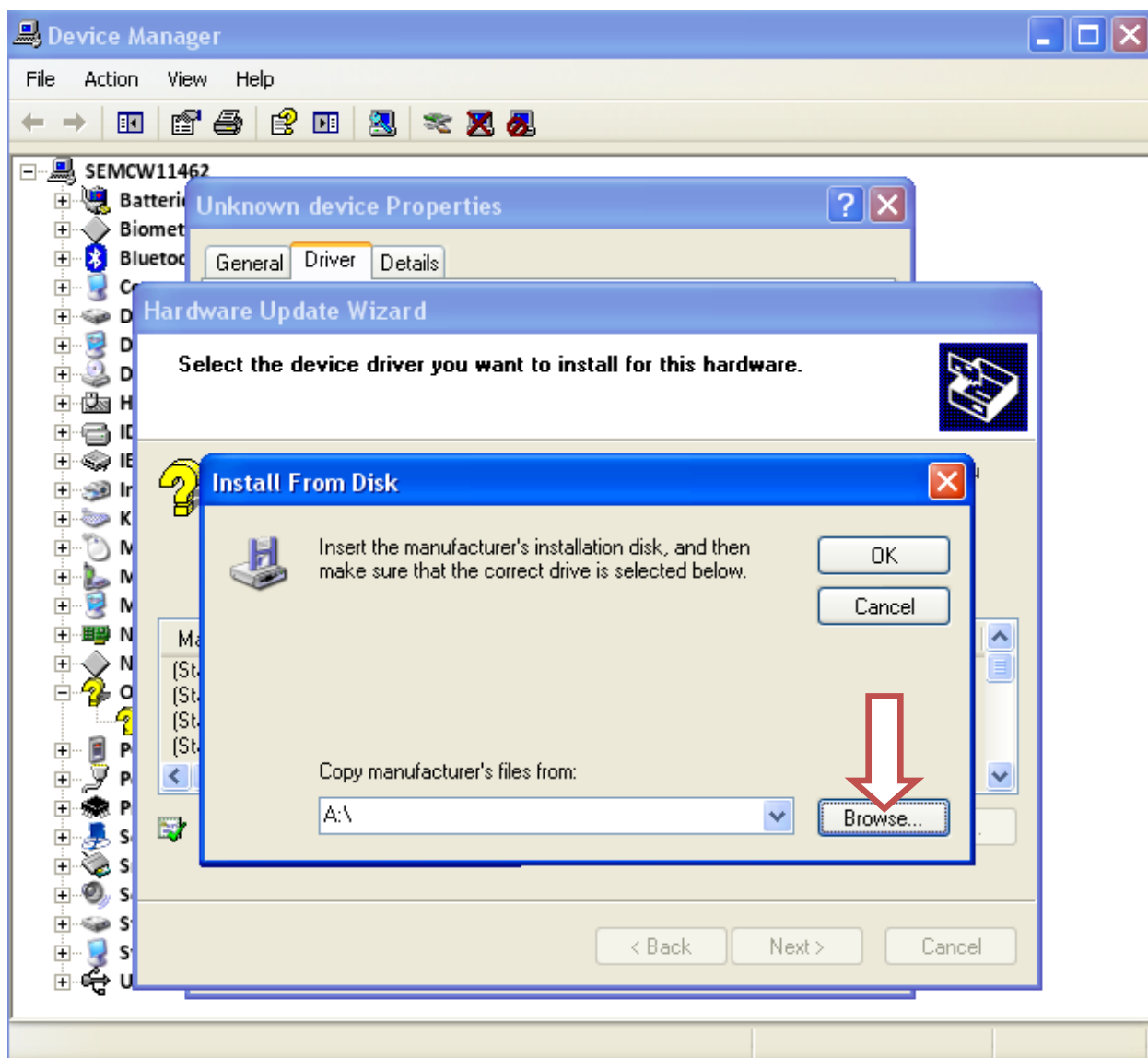
Click Next.



Click Have Disk.



Click Browse.



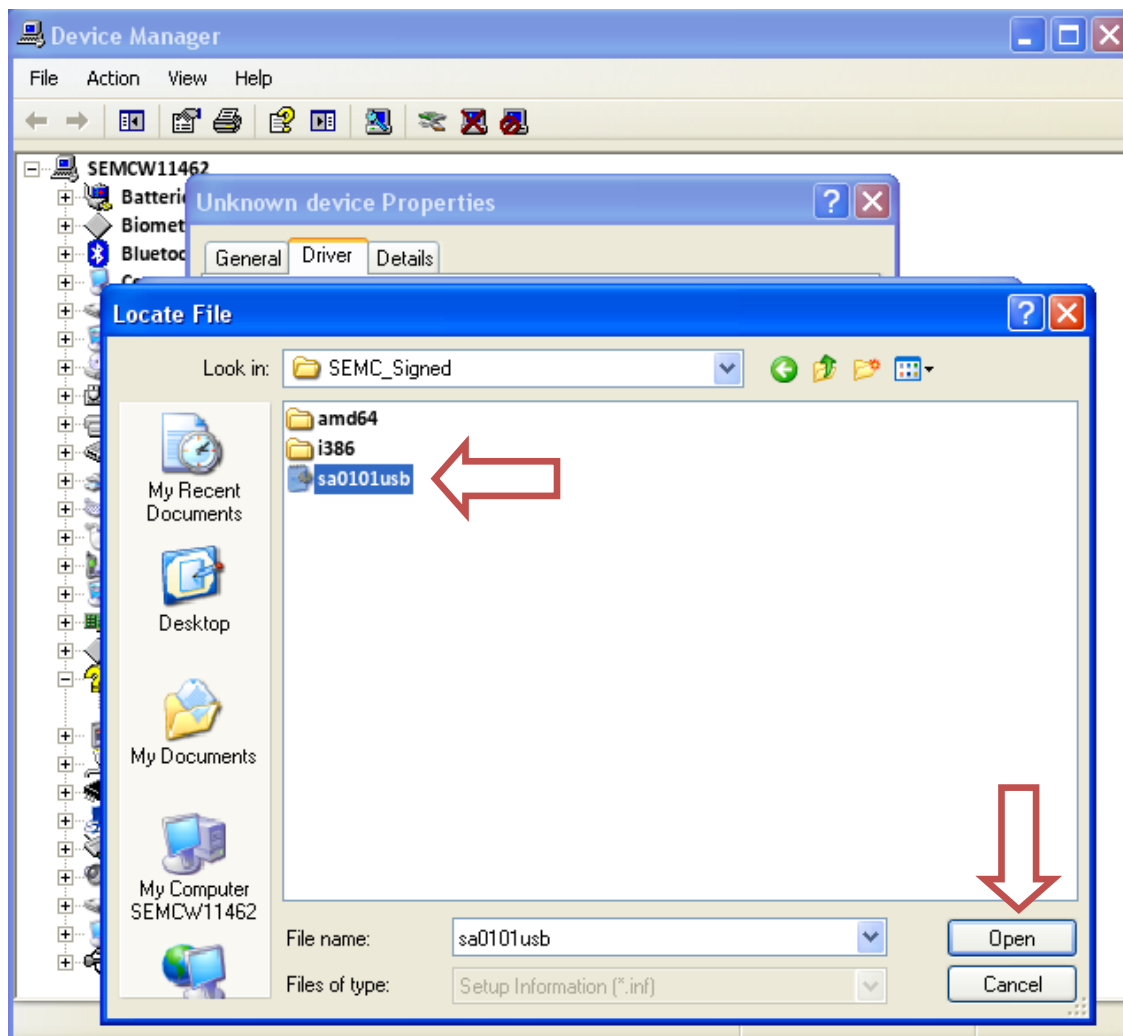
Browse to the folder where you have downloaded the driver.  
Select the so01xx usb driver. In the SEMC\_Signed folder.

**Use so0101usb driver for C2305 and S39h.**

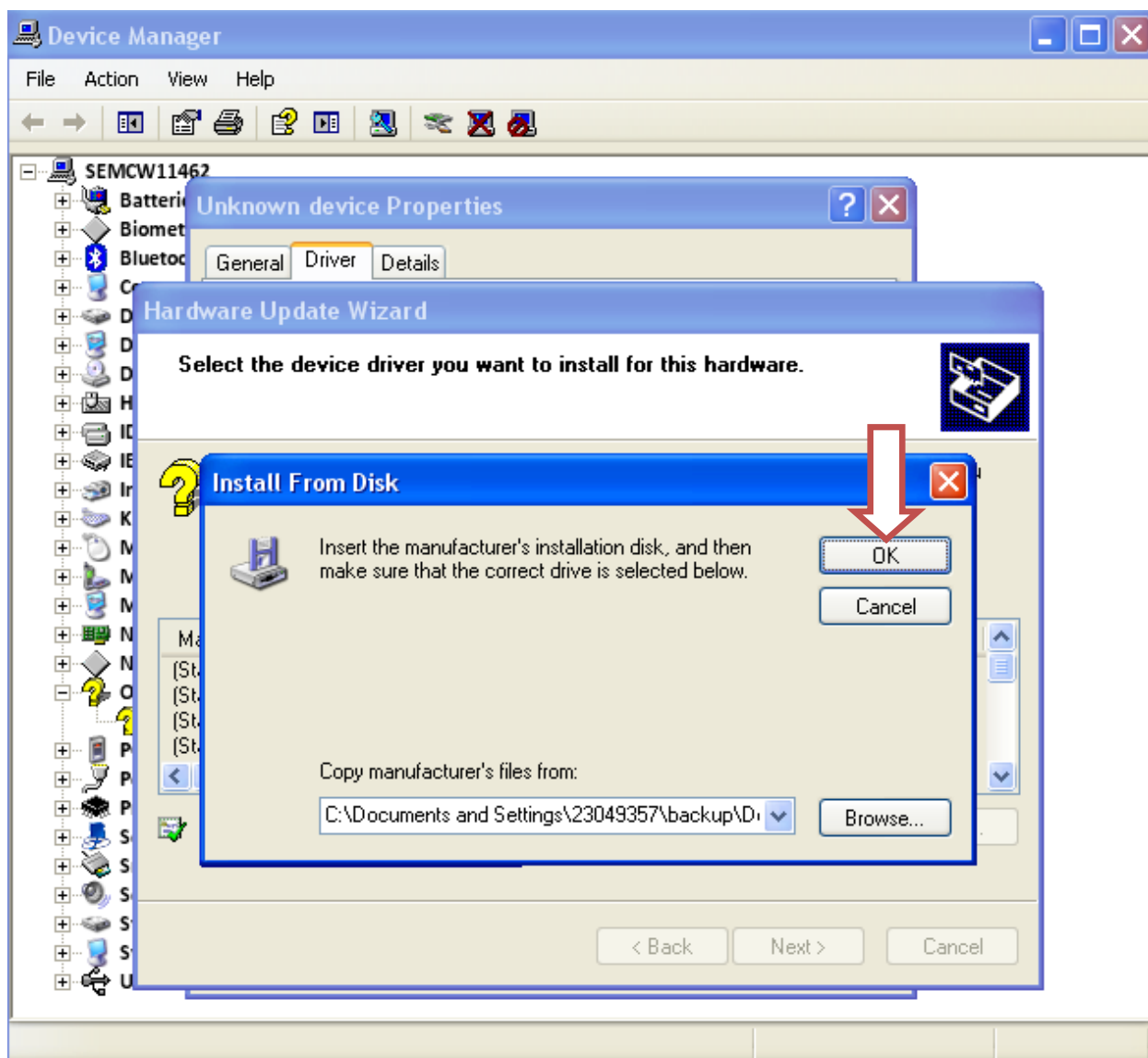
**Use so0106usb driver for D23xx and D24xx**

**Use so0109usb driver for D22xx.**

Click Open.

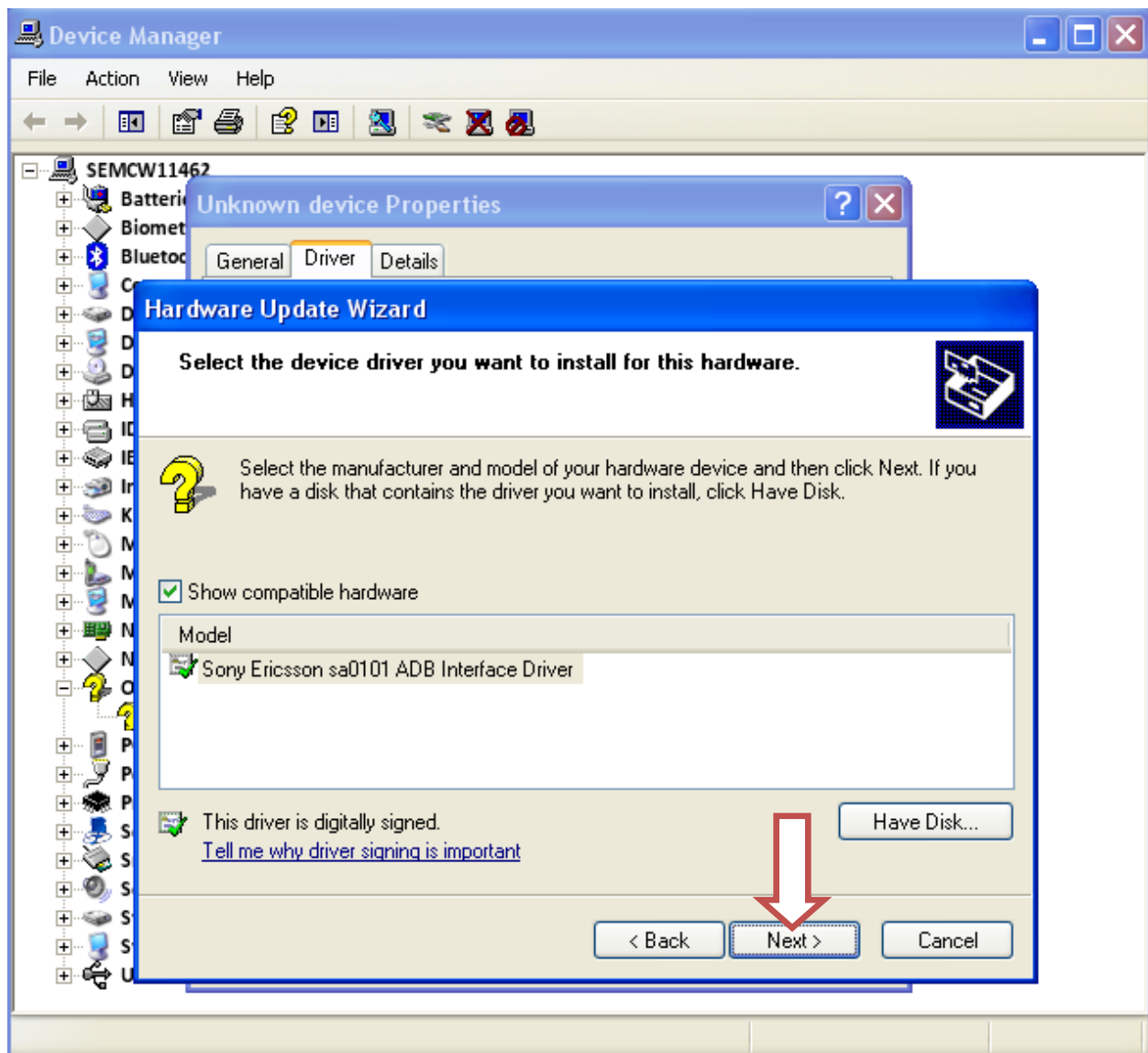


Click OK.

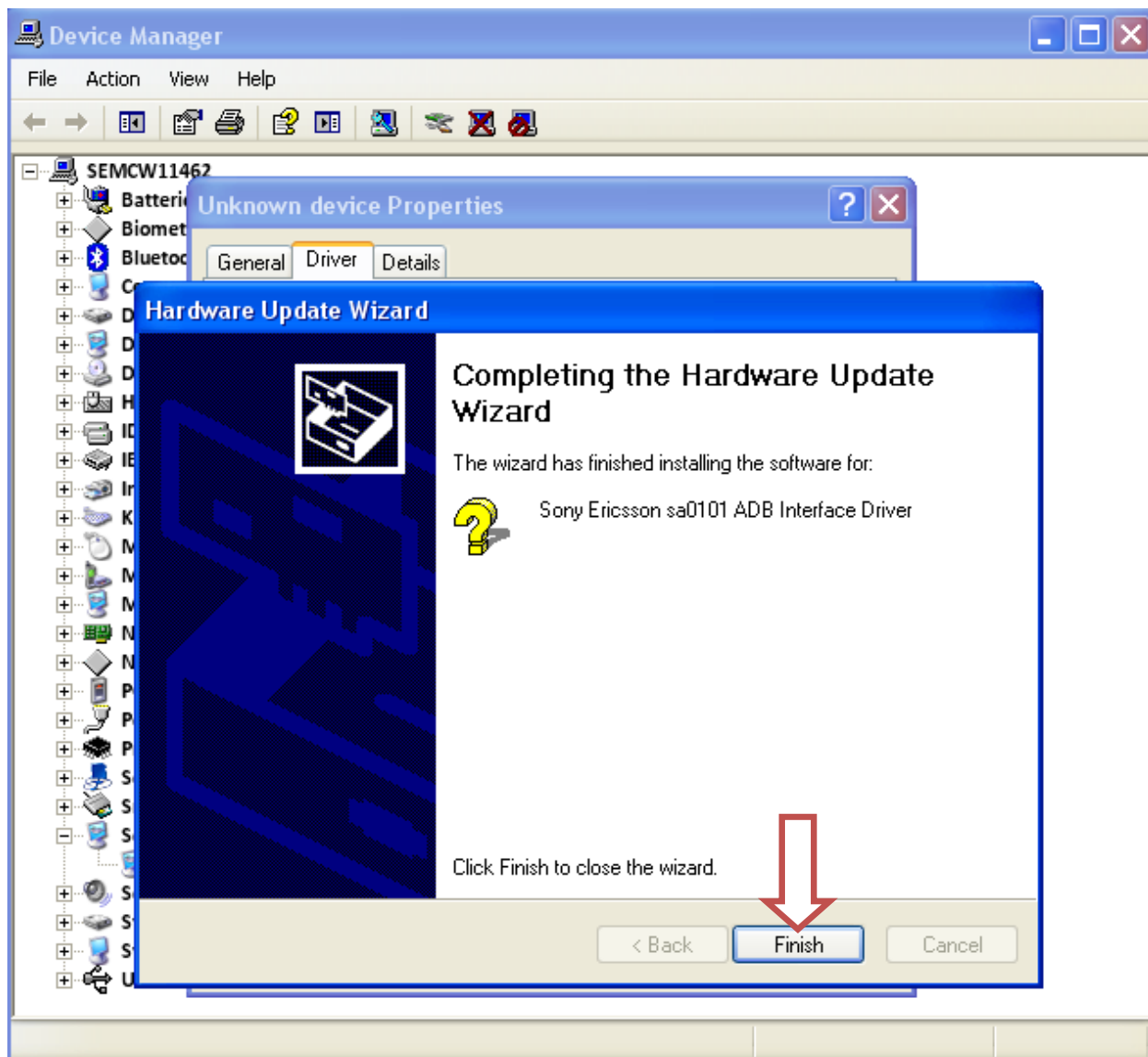




Click Next.



Click Finish.



Now it should say:

Sony so0101 ADB Interface Driver for C23

Sony so0106 ADB Interface Driver for D23xx and D24xx

Sony so0109 ADB Interface Driver for D22xx

